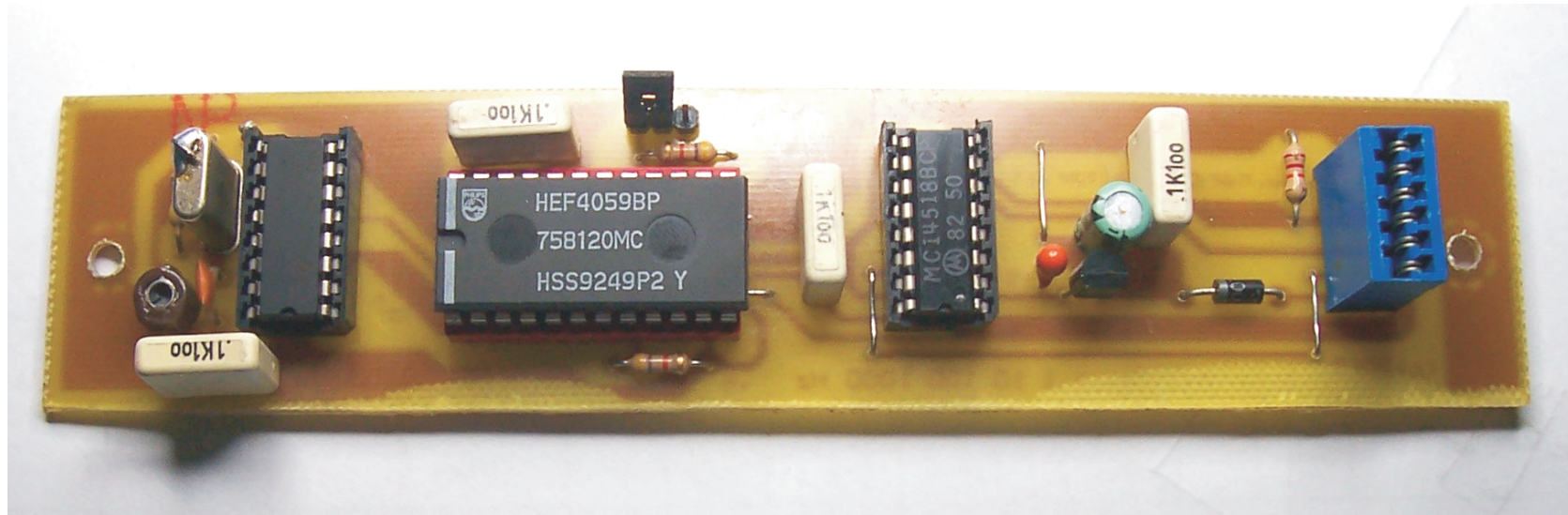


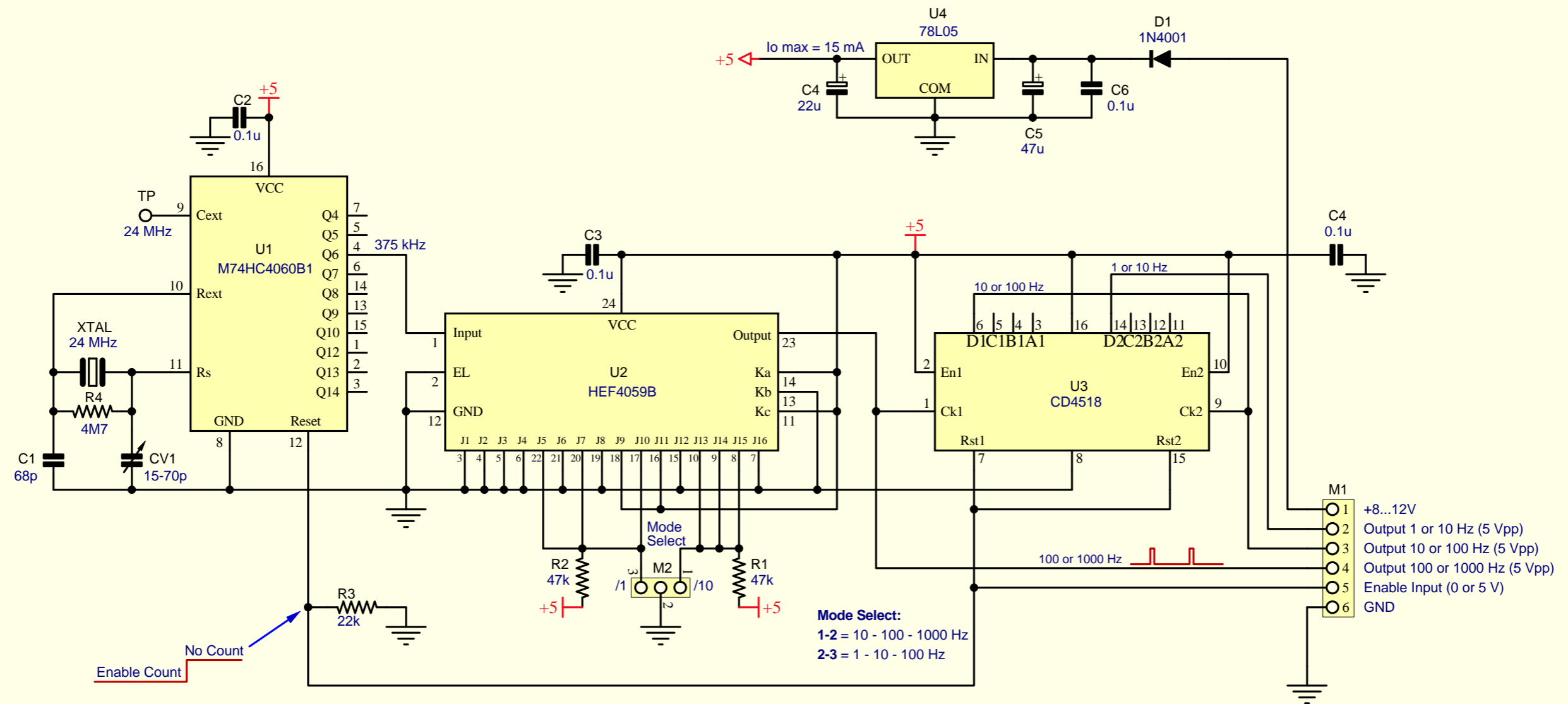
BASE DEI TEMPI - TIMEBASE

1 - 10 - 100 Hz
10 - 100 - 1000 Hz



MANUALE TECNICO





D

C

B

A

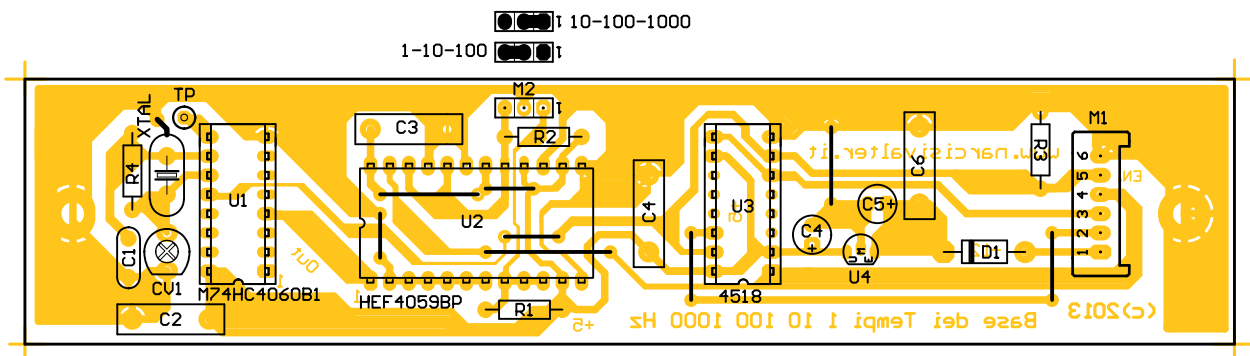
D

C

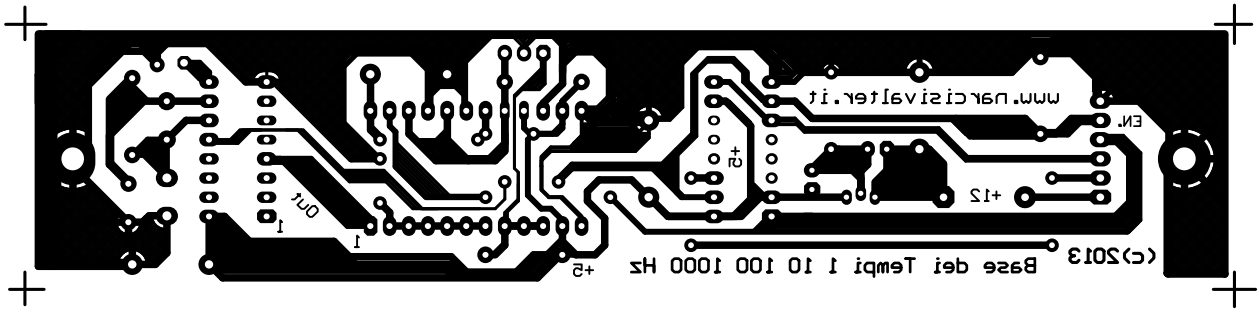
B

A

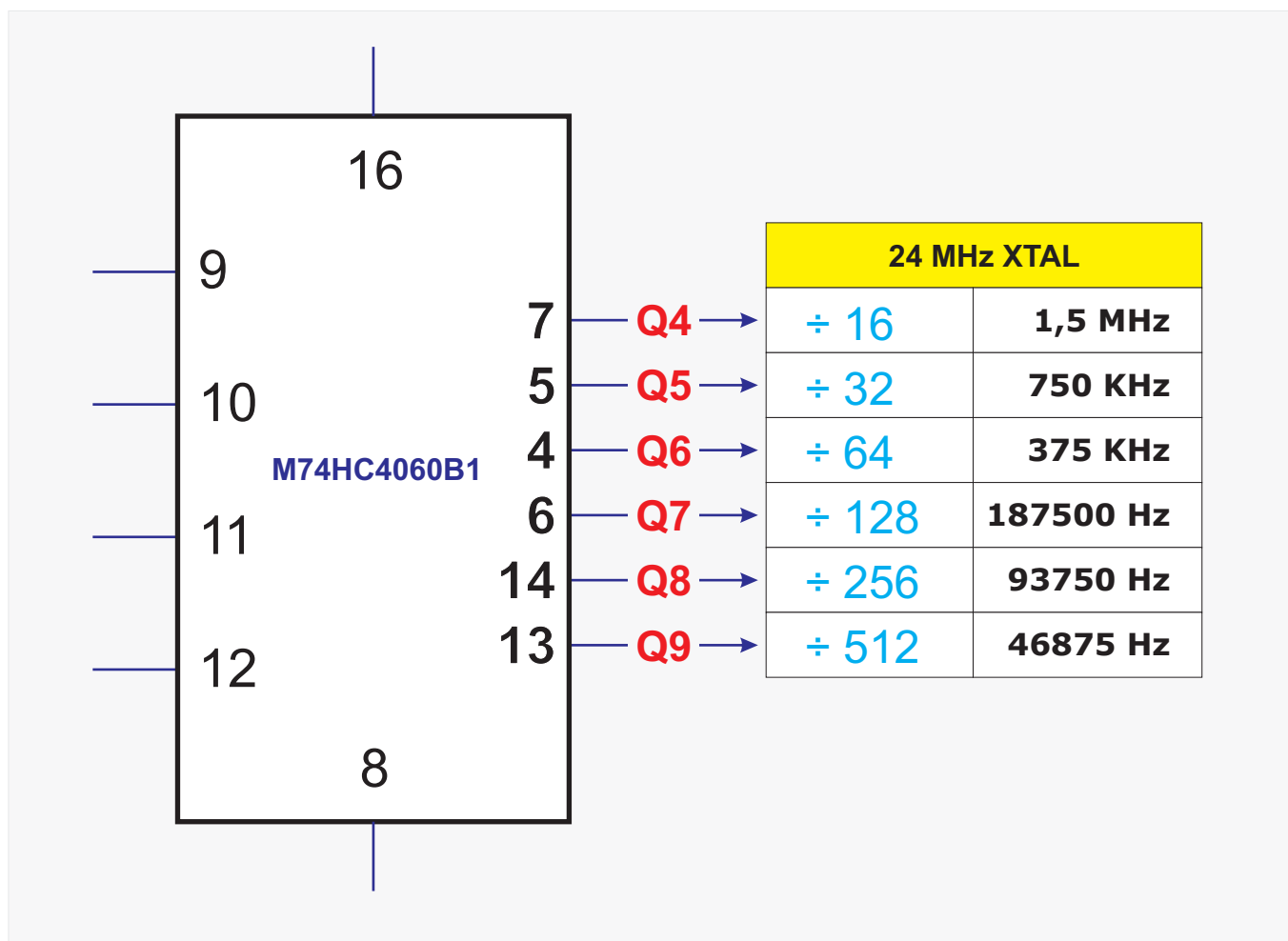
<i>Author:</i> Valter Narcisi - San Benedetto del Tronto (AP)				
<i>Project:</i> Base dei Tempi - 1 / 10 / 100 / 1000 Hz				<i>Year:</i> 2013
<i>Size:</i> —	<i>DWG no.</i> 1	<i>Rev.:</i> 1	<i>Scale:</i> 1:1	<i>Sheet:</i> 1 of 1
<i>Note:</i> www.narcisivalter.it - info@narcisivalter.it				



Time Base - PCB Layout (160x35 mm)



Frequenze di Uscita con Quarzo da 24 MHz



Timebase - PCB

(160 x 35 mm)

